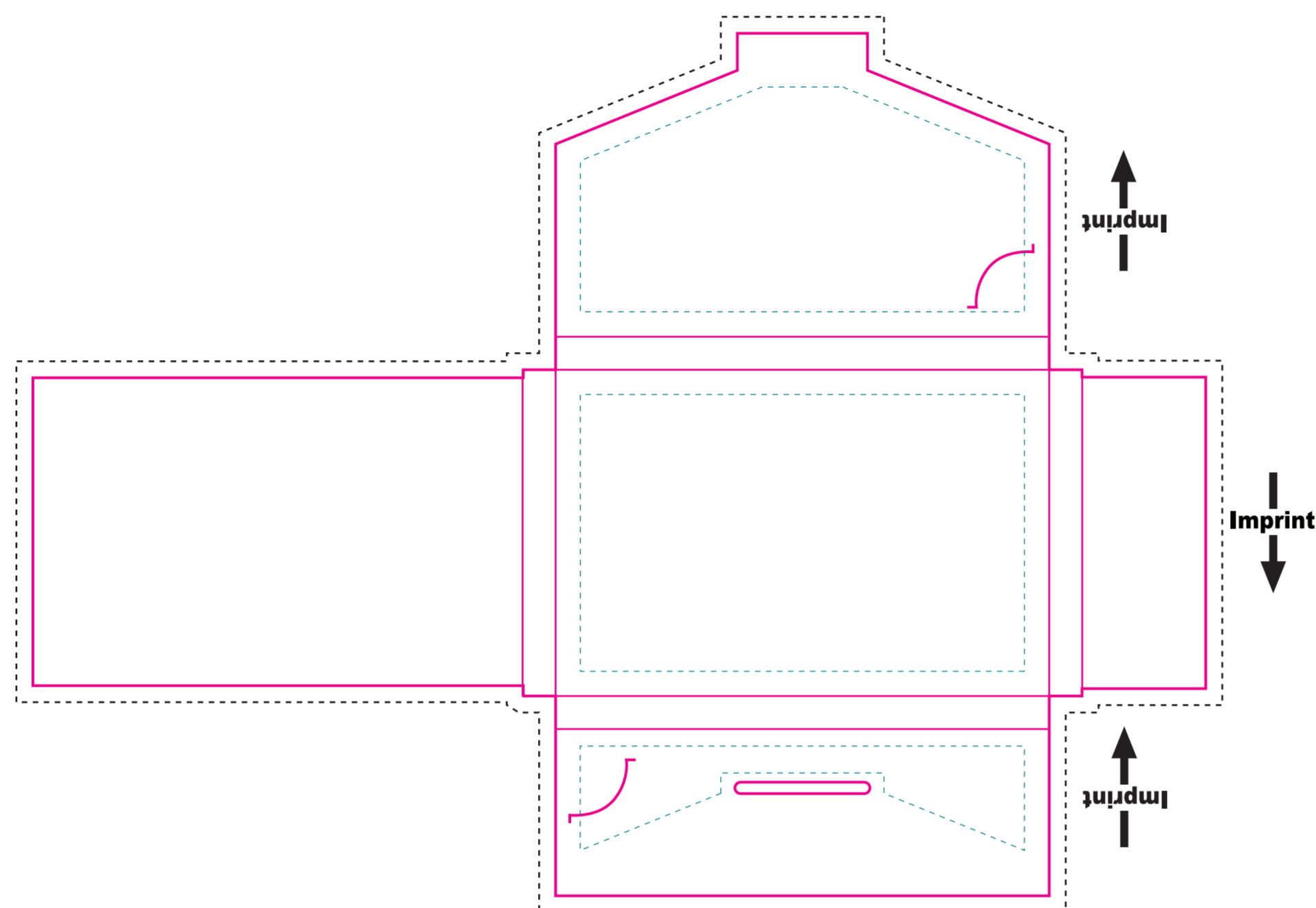
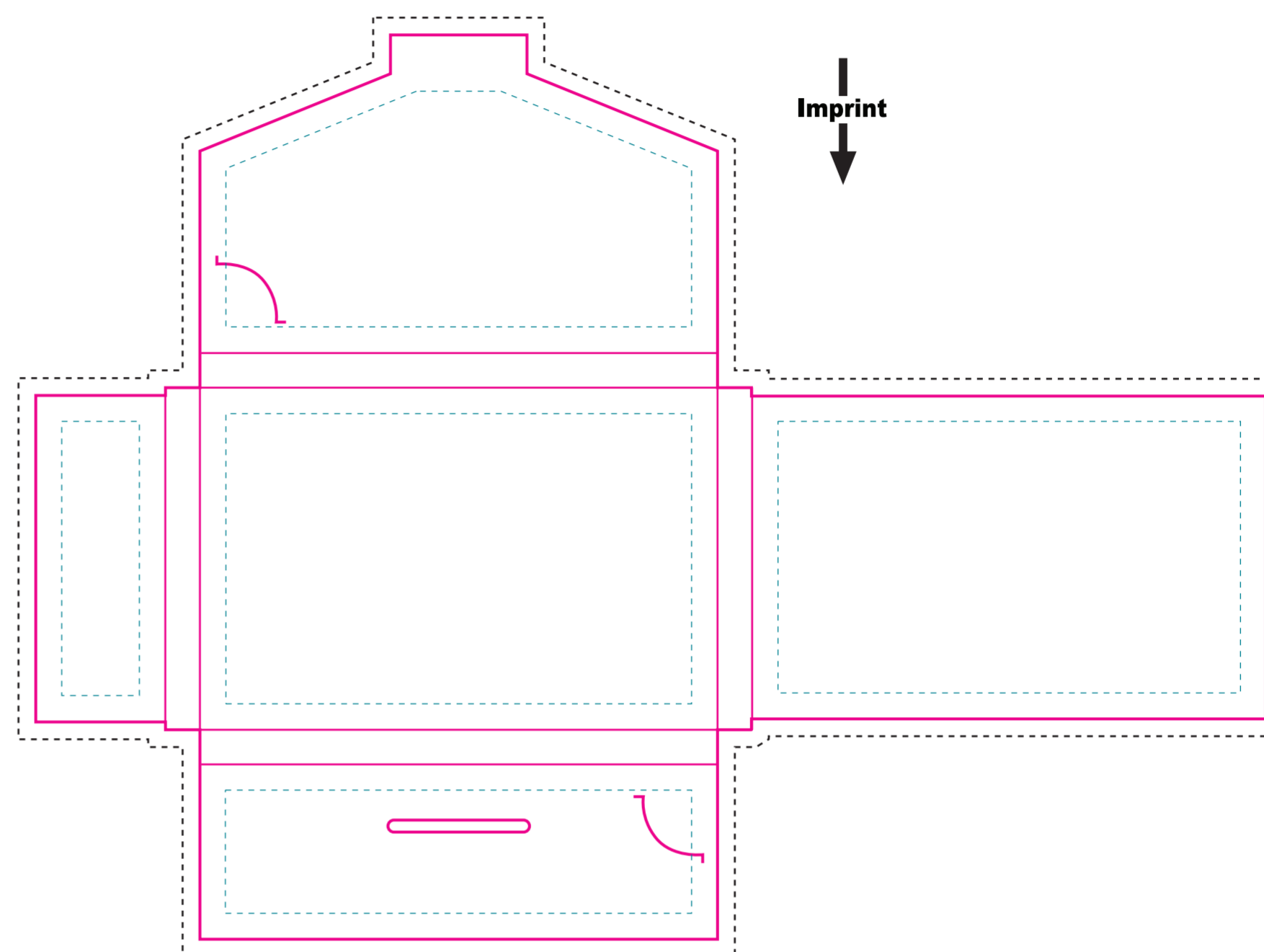


FRONT



BACK



SAFE ZONE:

All critical elements (text, images, graphics, logos, etc.) must be kept inside the blue box.

TRIMMING ZONE:

Please stay within the zone for cutting tolerance around your folder. We do not recommend having borders due to shifting in the cutting process, which may cause borders to appear uneven.

BLEED ZONE:

Make sure to extend the background images or colors all the way to the edge of the black outline.

IMPORTANT

When submitting final artwork, please convert all fonts to outlines and embed all images. Raster artwork should be 300dpi at final size for best output.